

USER MANUAL FOR ROLLING SHUTTER MOTOR'S 400/600/800/1000/1300/1500 & 2000



Maxwell[®]
Auto Doors INDIA Pvt, Ltd.

A Subsidiary Company of Maxwell
Automatic Doors – Dubai

WARNINGS FOR USERS

- Keep this manual in a safe place to be consulted whenever necessary.
- If the product has contact with fluids without being prepared, it must immediately disconnect from the power supply to avoid short circuits, and consult a specialized technician.
- Ensure that technician has provided you the product manual and informed you how to handle the product in an emergency.
- If the system requires any repair or modification, unlock the automatism, turn off the power and do not use it until all safety conditions have been met.
- In the event of tripping of circuits breakers or fuse failure, locate the malfunction and solve it before resetting the circuit breaker or replacing the fuse. If the malfunction is not repairable by consult this manual, contact a technician.
- Keep the operation area of the motorized gate free while the gate is in motion, and do not create strength to the gate movement.
- Do not perform any operation on mechanical elements or hinges if the product is in motion.

RESPONSABILITY

- Supplier disclaims any liability if:
 - Product failure or deformation result from improper installation use or maintenance!
 - Safety norms are not followed in the installation, use and maintenance of the product.
 - Instructions in this manual are not followed.
 - Damaged is caused by unauthorized modifications
 - In these cases, the warranty is voided.

02. GENERAL INFORMATION

SECURITY INFORMATION

Carefully read and follow all safety instructions and warnings before installing and using the Door. Incorrect installation may cause damage.

- The Door must be installed by a qualified technician; otherwise it may cause malfunction and damage.
- All users must be notified that they must not use the Door without being in sight.
- Keep the remote controls away from children, in order to prevent the door from being unintentionally activated.
- Before any technical intervention, the electricity must be cut off.
- DO NOT make any changes to any component of the Door, it may cause malfunction and damage.
- We do not accept liability for malfunction or damages.
- Do not go under the door while it is opening or closing.
- The door must be leveled.
- DO NOT PULL the chain or unlocking lever while the door is moving.
- DO NOT PULL the door for use, otherwise it may cause malfunction and damage (It is just an emergency brake).
- Regularly check the operating of the Door. If you notice any anomalies, please contact us.
- Our company reserves the right to change the design and specifications without prior notice.
- Please install the motor as shown. Otherwise we are not responsible for any damage.

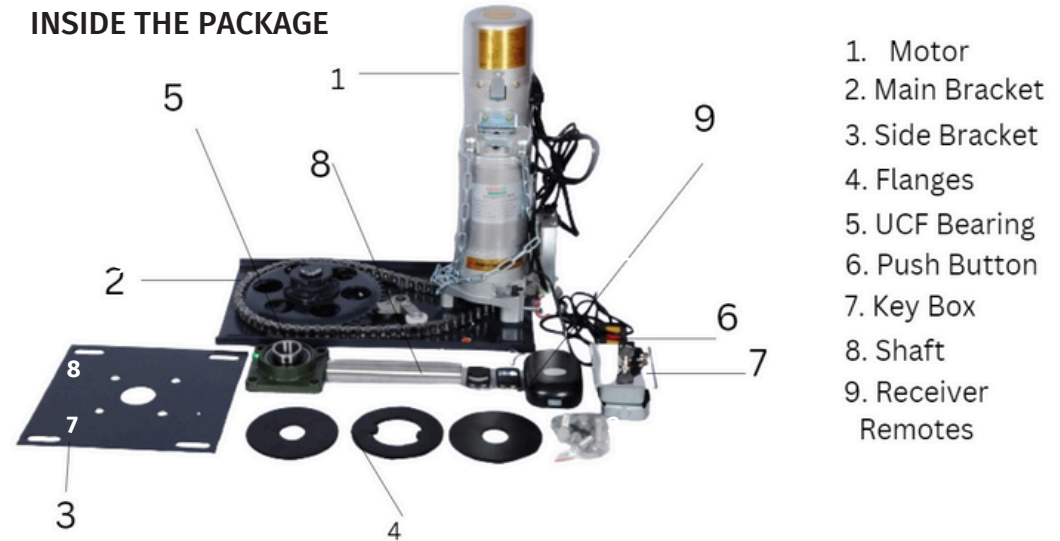
MODEL	RATED VOLT	INPUT POWER	OUTPUT TORQUE	LIFTING HEIGHT	MAX LIFTING WEIGHT	OPERATION TIME	FREQUENCY
RSM 400-1P	230V	300W	274N.m	4M	400KG	5 Min	50Hz
RSM 600-1P	230V	370W	412N.m	6M	600KG	10 Min	50Hz
RSM 800-1P	230V	460W	647N.m	9M	800KG	11 Min	50Hz
RSM 1000-1P	230V	550W	809N.m	9M	1000KG	10 Min	50Hz
RSM 1300-1P	230V	650W	1420N.m	9M	1300KG	10 Min	50Hz
RSM 1500-1P	220V	750W	1617N.m	10M	1500KG	13 Min	50Hz
RSM 1500-3P	380V	800W	1617N.m	10M	1500KG	13 Min	50Hz
RSM 2000-3P	380V	1500W	2450N.m	12M	2000KG	13 Min	50Hz

TECHNICAL CHARACTERISTICS

- Compact, attractive, safe design and reliable performance.
- Light, silent, easy installation.
- Operations manual in case of power failure.

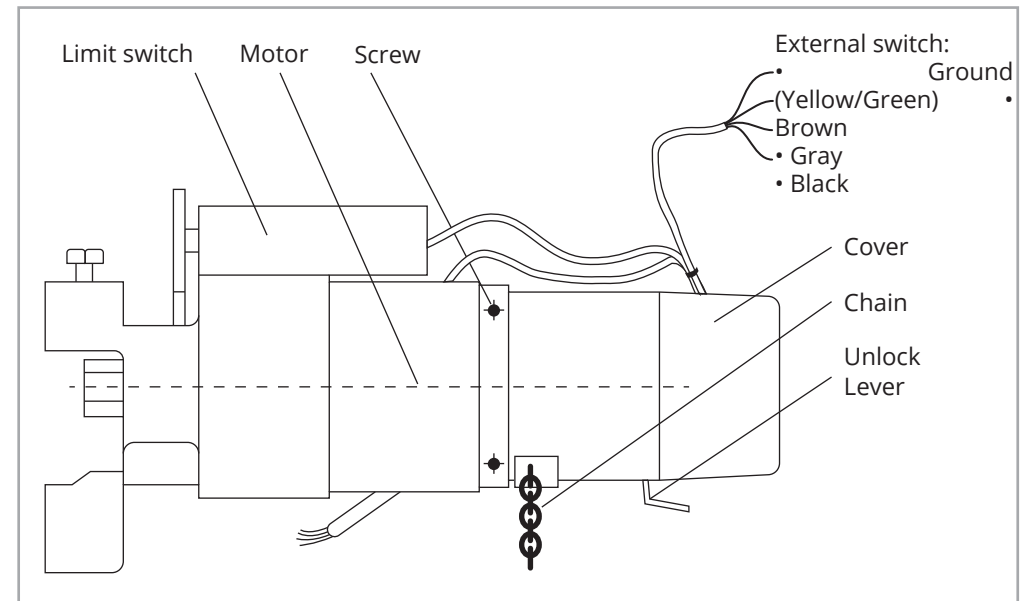
03. PACKAGE

INSIDE THE PACKAGE



1. Motor
2. Main Bracket
3. Side Bracket
4. Flanges
5. UCF Bearing
6. Push Button
7. Key Box
8. Shaft
9. Receiver Remotes

TECHNICAL DRAWING

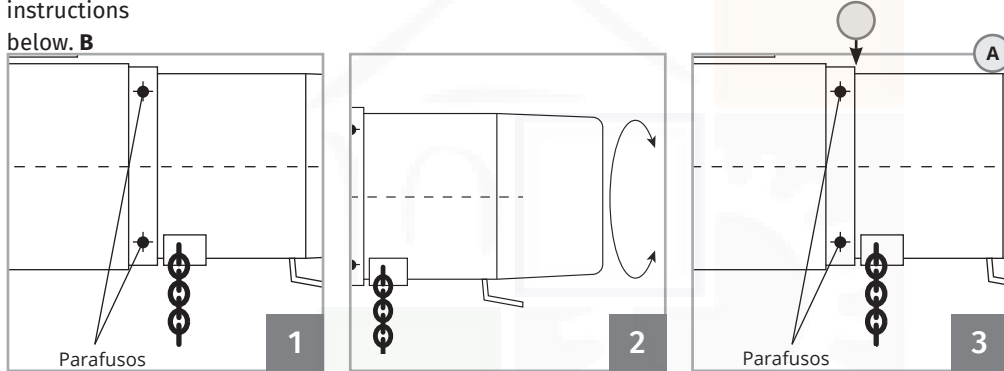


04. INSTALLATION AND ADJUSTMENTS

INSTALLING THE MOTOR ON THE LEFT SIDE

It is possible to install the door motor on the left or right side. It is normally delivered on the right side (seen from the opening side). If you need to switch to the left side, follow the instructions below.

below. **B**



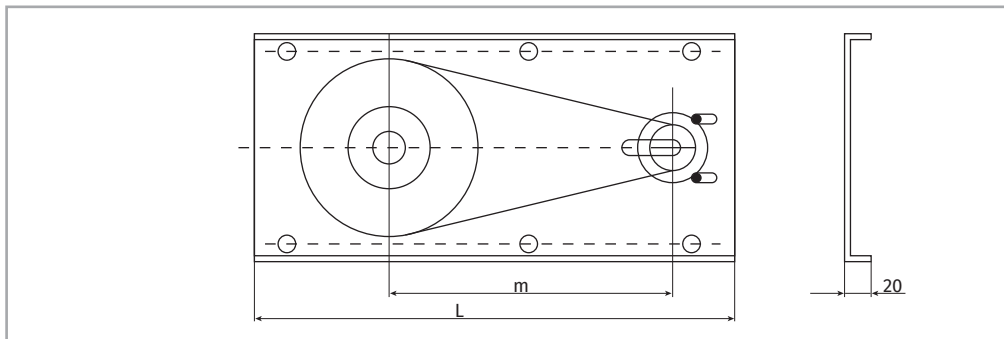
01 • Loosen the 4 screws

02 • Rotate 180 degrees

03 • Confirm that the chain is in the vertical position, and retighten the 4 screws. Ensure there are no gaps between the "A" sections.

GEAR BRACKET

Install the gear bracket on the wall or the bracket horizontally. If the distance is insufficient, the bracket angle must be adjusted (installation angle can be adjusted between 0° and 44°, make sure the chain stays in the vertical position). Dimensions for installation (see table).

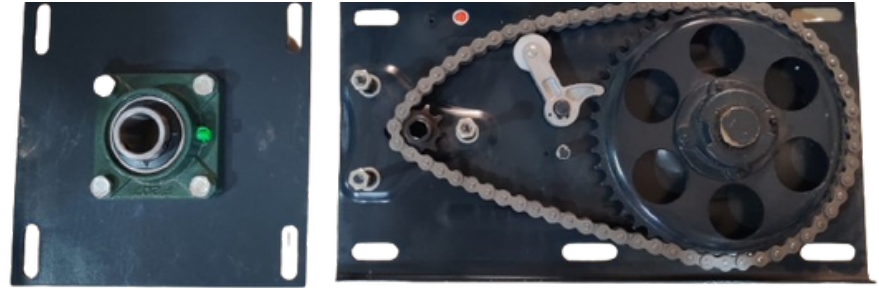


Model	Distance to centers	Length	Width
ROLLING600SP	304 mm	515 mm	300 mm
ROLLING800SP	345.5 mm	580 mm	320 mm
ROLLING1000S	339 mm	600 mm	360 mm

04. INSTALLATION AND ADJUSTMENTS

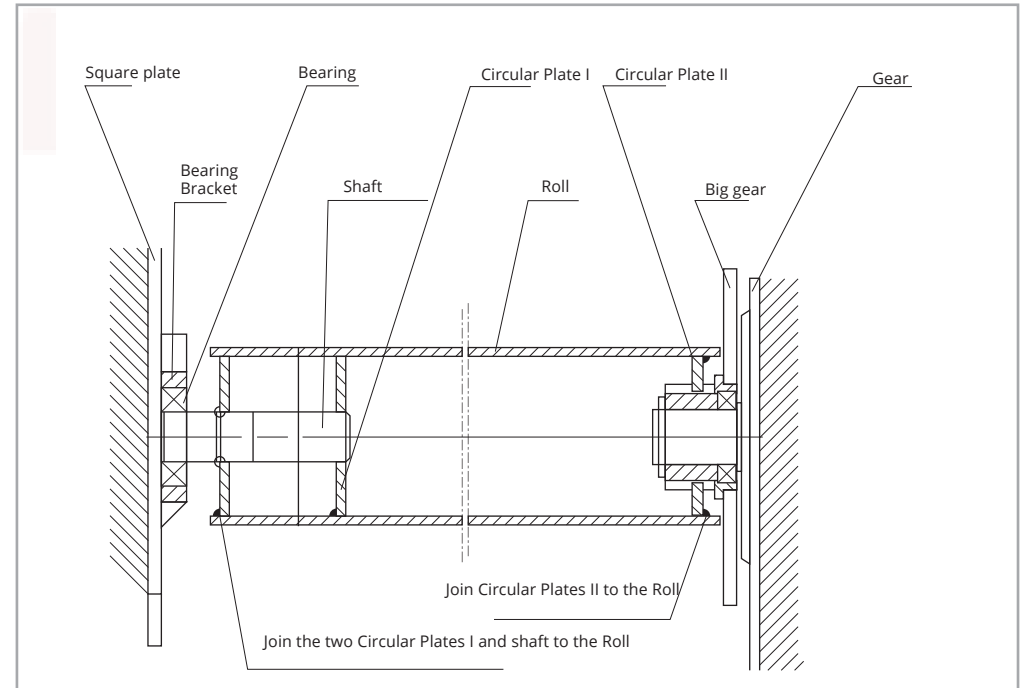
SQUARE PLATE BRACKET

Fix the bracket to the square plate as shown. Fix the square plate to the wall or wall bracket on the opposite side of the gear.



BEARING INSTALLATION

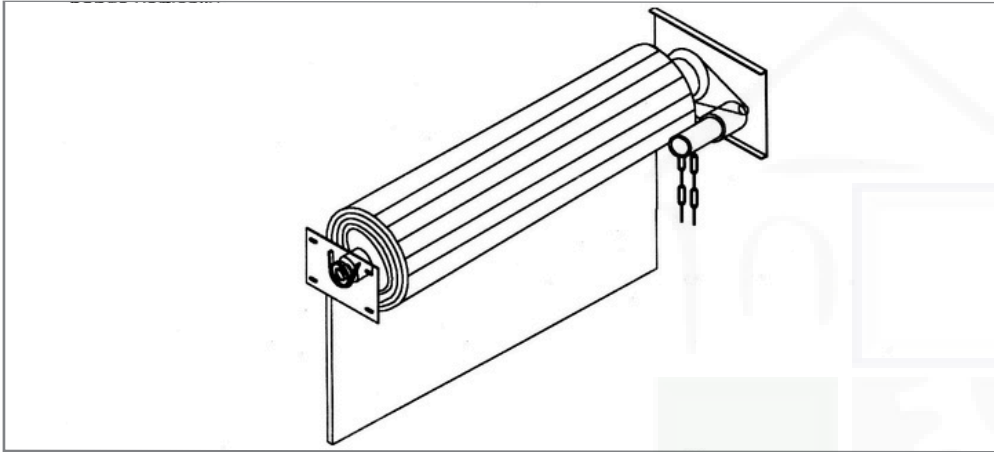
Install the bearing as shown below.



04. INSTALLATION AND ADJUSTMENTS

INSTALLATION OF THE GEAR

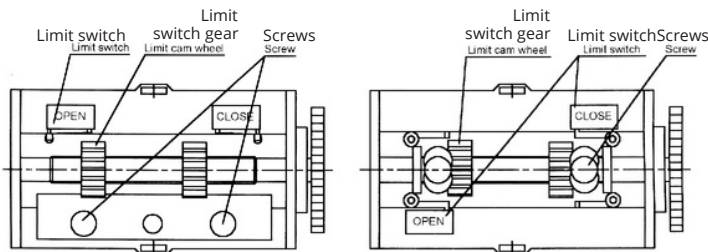
Fix the door motor to the gear. Make sure the nuts are tight and the chain is vertical position.



LIMIT SWITCHES ADJUSTMENT

Limit switches are needed to adjust the opening and closing positions.

- 01 • Turn the screw to release the limit switch gear and open the door to the desired position, turn the limit switch gear until you hear the OPEN switch click, and tighten the screw.
- 02 • Turn the screw to release the limit switch gear and close the door to the desired position, turn the limit switch gear until you hear the CLOSE switch click, and tighten the screw.
- 03 • After adjustment, you can open and close the door to see if the door successfully reaches the opening and closing positions. If the door does not reach the desired opening and closing position, adjust the gear until you find the desired distance.



04. INSTALLATION AND ADJUSTMENTS

CHAIN

The Motor is supplied with a chain for manual lifting of the grille.
In case of using the chain, make slow movements to move the grille.
Cannot move the chain when the motor is running.
For greater safety, when moving the chain, turn off the circuit breaker that supplies the motorization.



ATTENTION: Respect this information so that you do not damage the product or cause personal injury.

Pull the unlocking lever to quickly release the door.



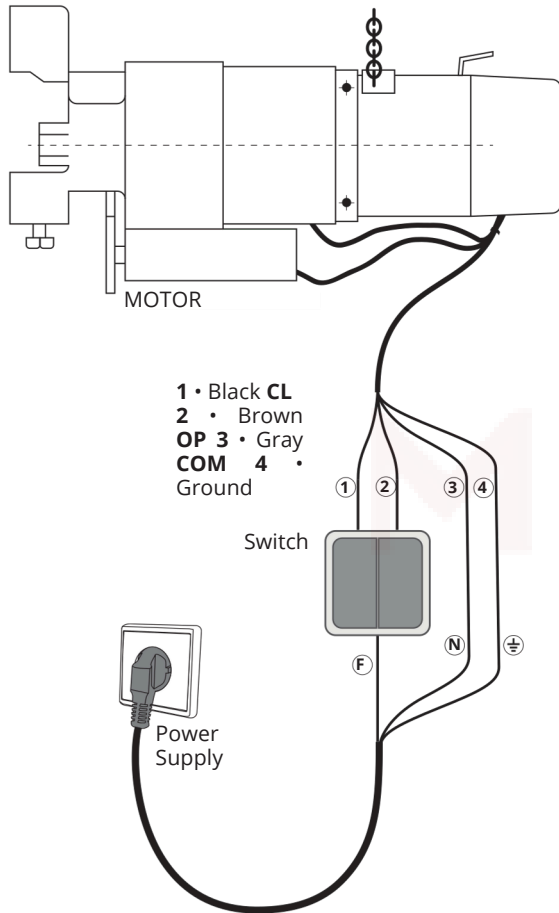
WARNING: When pulling the unlocking lever to release the door, do not attempt to step through the door. Otherwise, serious malfunctions or equipment damage may occur.

05. CONNECTION SCHEME

CONNECTION TO SWITCH OR CONTROL BOARD

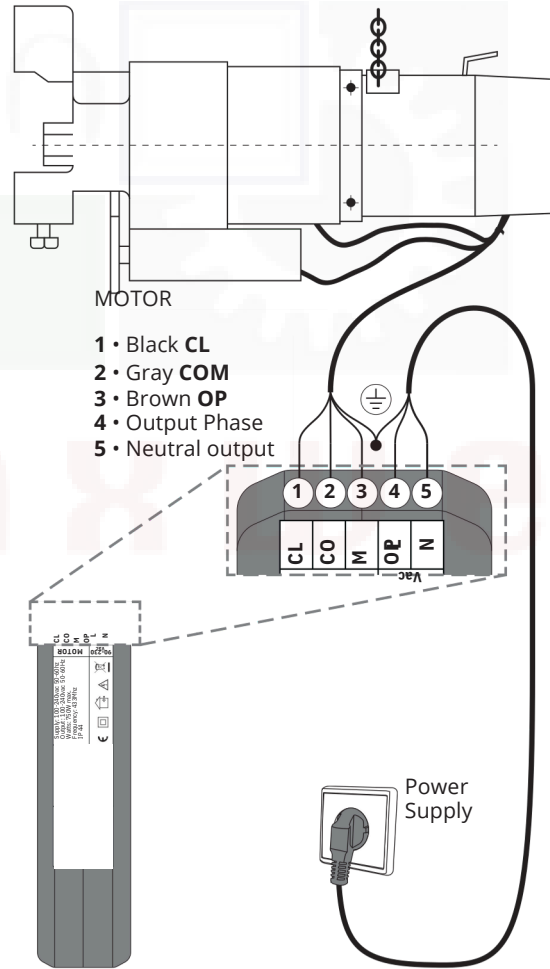
SWITCH

- Included as standard



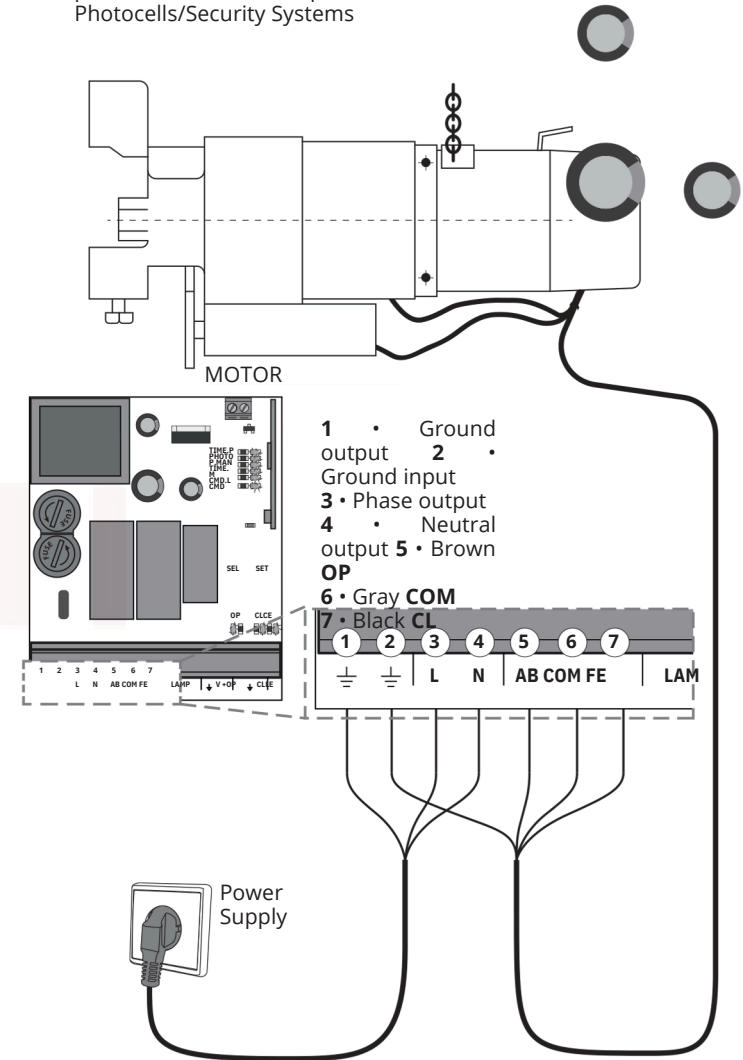
MC4 EVO (OPTIONAL)

- Control board to work only with remote control



MC75 (OPTIONAL)

- Control board to work with remote control, pushbutton and allows placement of Photocells/Security Systems



The rolling door motor must be connected to the ground, connect the ground wire to the gear bracket. If the direction of movement of the door is wrong, the connection wires must be reversed.

06. F&Q

Check the door once a month. The door must be working without any defect.
Regularly check the limit switches.

For assistance, contact a qualified technician.

Our company reserves the right to change the design and specifications without prior notice.

TROUBLESHOOTING

Behavior	Procedure	Find the source of the problem
Door does not stop at desired position.	Check limit switches	Replace limit switch or check connections and adjustments
Motor only works in one direction	Check limit switches or Photocells	Check wires for Limit switches.
Motor fails when external Pushbutton is pressed	Check Pushbutton contacts	Replace switch or check connections
After stopping the door goes down/ up	The locking brake is worn out	Check compression spring on motor, add a spacer if necessary

Maxwell